

**总部·圣奥科创园**

中国·浙江省杭州市萧山区知行路1666号

**萧山现代化生产基地**

中国·浙江省杭州市萧山经济技术开发区宁东路35号

**海宁生态制造基地**

中国·浙江省海宁市尖山新区安仁路6号

**钱塘智造基地**

中国·浙江省杭州市钱塘区青西三路5806号

**圣奥办公(雄衡)产业园**

中国·河北省深州市经济开发区恒信新路北侧

**圣奥国际(北美)基地**

墨西哥·新莱昂州蒙特雷市华富山工业园区

**Headquarters & Experience Center  
- Sunon Technological Innovation Park**

No. 1666 Zhixing Road, Xiaoshan District,  
Hangzhou, Zhejiang, China  
TEL: +86 571 88166666 PC: 311200

**European R&D Center**

Brunnenstrasse 156, 10115 Berlin, Germany

**Singapore Branch & Experience Center**

#01-02 R Building, 18 Robinson Road, Singapore 048547

**USA Branch & Experience Center**

525 Technology Drive Suite 150 Irvine, CA.92618

**India Branch & Experience Center**

Floor I & II, 643, Rd Number 36, Aditya Enclave, Venkatagiri,  
Jubilee Hills, Hyderabad, Telangana 500033, India

**Sunon Xiaoshan Manufacturing Base**

No. 35 Ningdong Road, Xiaoshan Eco&Tech Zone (XETDZ),  
Hangzhou, Zhejiang, China  
TEL: +86 571 82833568 PC: 311200

**Sunon Haining Manufacturing Base**

No. 6 Anren Road, Jianshan New District,  
Haining, Zhejiang, China  
TEL: +86 573 87800900 PC: 314415

**Sunon Qiantang Manufacturing Base**

No. 5806 Qingxi Third Road, Qiantang District,  
Hangzhou, Zhejiang, China  
TEL: +86 571 56115058 PC: 310000

**Sunon Northern Industrial Park**

North of Hengxin New Road, Economic Development Zone,  
Shenzhou, Hebei, China  
PC: 053899

**Sunon Mexico Manufacturing Base & Experience Center**

Calle Palomas No. 201, Parque Industrial Hofusan, Salinas Victoria,  
Nuevo León CP 65500



Sunon



U SERIES / 悠系列

# THERE ARE A THOUSAND YOU IN A THOUSAND PLACES.

## 千万个场合, 你有千万面

工作中的自己, 生活中的样子,  
一个人思考, 协作讨论或会议决策,  
千万面应对中, 悠然做自己。  
U 系列沙发椅, 灵感来自 U 字母的圆润轮廓,  
YOU 的千万面, 自在展现。

At the same time, you are always being yourself,  
on work or off work, for collaboration, independent  
thinking or making decision in a meeting.

U series sofa draws its inspiration from the letter  
"U" for its mellow shape, and the multifaceted  
"YOU" is naturally revealed on U series sofa.



# UX, FLYING FREE



于奔波中停泊这一刻，寻回属于自己的宁静角落，冥想式座舱为你身心蓄能。  
身于方寸之间，心翔无尽之野，X字母的注脚，是无限于形的自由。

Take a moment to pause from the hustle and bustle and find your personal sanctuary. Our meditative cabin design recharges your body and mind. In this small space, your spirit soars to new heights. The "X" symbolizes boundless freedom.



### 全身段贴合，做你的温柔港湾

#### A Gentle Harbour, A Full-Body Embrace

一体化怀抱式头等舱，从头到脚的体贴包裹；  
羽绒被同等柔软绒包，自身到心的温柔抚触。  
无人可述的压力，交付给它。

Our all-in-one cradle-style seat wraps you in comfort from head to toe.  
With a softness akin to a down comforter,  
it offers gentle support for both your body and mind.  
Let it carry the weight of your day.



UX.



采撷自然之色，奢雅双质碰撞  
 Nature's Palette, Luxurious Dual Materials

双种面料可选，数十种自然纯境原色。荔枝纹真皮，糅合零感云柔，70余道工序，近1000小时细作。雪尼尔麻绒，粲然千丝汇彩，色感精致，如完美混合的鸡尾酒。

Choose from two premium fabrics and dozens of nature-inspired colors. The litchi-textured leather, combined with cloud-like softness, is crafted through 70 intricate processes over 1,000 hours. The chenille-linen blend features vibrant, delicate hues, like a perfectly mixed cocktail.



米驼色    咖啡色    秋日橙    浆果红    苍岭绿    流星灰    曜石黑



### 头等舱高背，私密的疗愈之静

#### First-Class High-Back A Private, Soothing Retreat

750mm 高背阻隔身后视线。  
无人扰扰的静谧时刻，独处独乐的自我取悦。  
海浪、鸟鸣、辉光皆在心中，悠享生生不息的自由。

With a 750mm high backrest that shields you from behind, enjoy a peaceful, undisturbed moment. Immerse yourself in the sounds of the ocean, birdsong, and glowing light, savoring the ever-present freedom.



### 空间不设限，游刃于社交场域

#### Versatile Comfort, Ready for Any Social Setting

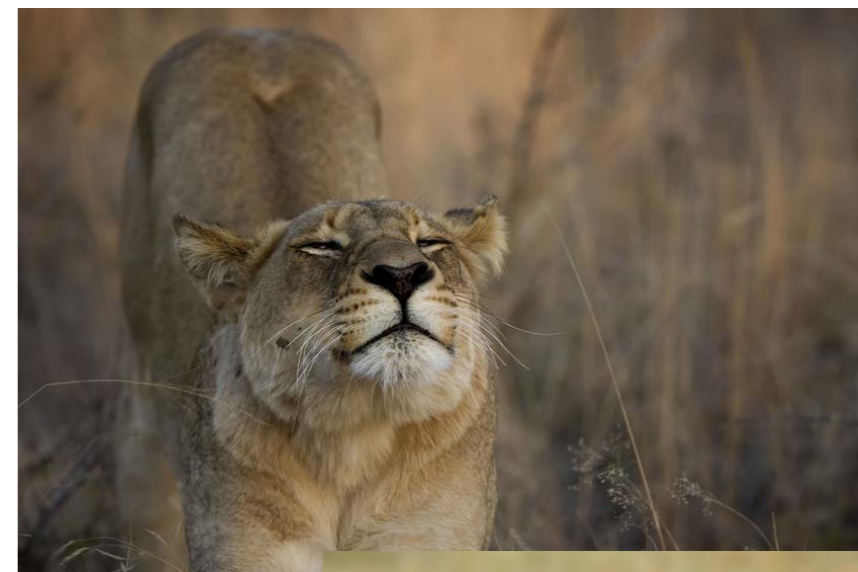
悬浮脚椅 360°灵活旋转，立体椅身挺阔魅力塑形。  
谈笑张弛有度，交流开阔自在，任意场合都能收放自如。

The floating footrest swivels 360°, and the chair's structured design makes a bold statement. Whether you're chatting or relaxing, it adapts effortlessly, making it perfect for any occasion.





以低趴的姿态，  
 演绎动物初醒时的拉伸舒展，  
 为沙发注入新的生命活力。  
 R字母外形，是自然的诠释。



# UR, RELAX

In a reclined posture,  
 enact the stretching and flexing of awakening animals.  
 Injecting new vitality into the sofa.  
 The letter "R" in shape interprets nature.





悠然如晖，  
色彩绚烂，耀眼却温柔。

UR, like the radiance,  
brilliant in hues, dazzling yet gentle.



用心感受每一刻的宁静与自由。

Feel the tranquility and freedom in every moment with your heart.



靠背捏边一线贯穿，  
如昆仑山脉延绵不绝。

The backrest is refined edging,  
like the continuous Kunlun Mountains.



三防麻绒, 是水过无痕的纯净;  
内部褶皱, 是自然纹理的注解。

The triple-proof linen is pure, leaving no trace of water.  
The internal wrinkles are annotations of natural textures.



不如来一场和煦午后的闲谈。  
Why not indulge in a warm afternoon chat?



闲暇时刻, 多一份松弛与从容。

In moments of leisure, add a dash of relaxation and composure.



悠然如海,  
宽广包容, 海内存知己。

UR, like the sea,  
extensive and inclusive, leisurely and carefree.





悠然如林，  
惬意静谧，享受每一次呼吸。

UR, like a forest,  
feel pleasant and enjoy every breath.



无需翻山越岭，悠然陪伴，时与风景为邻。

No need to traverse mountains and hills. Sit on UR, and enjoy.



# UU, LIKE A SMILING MOUTH



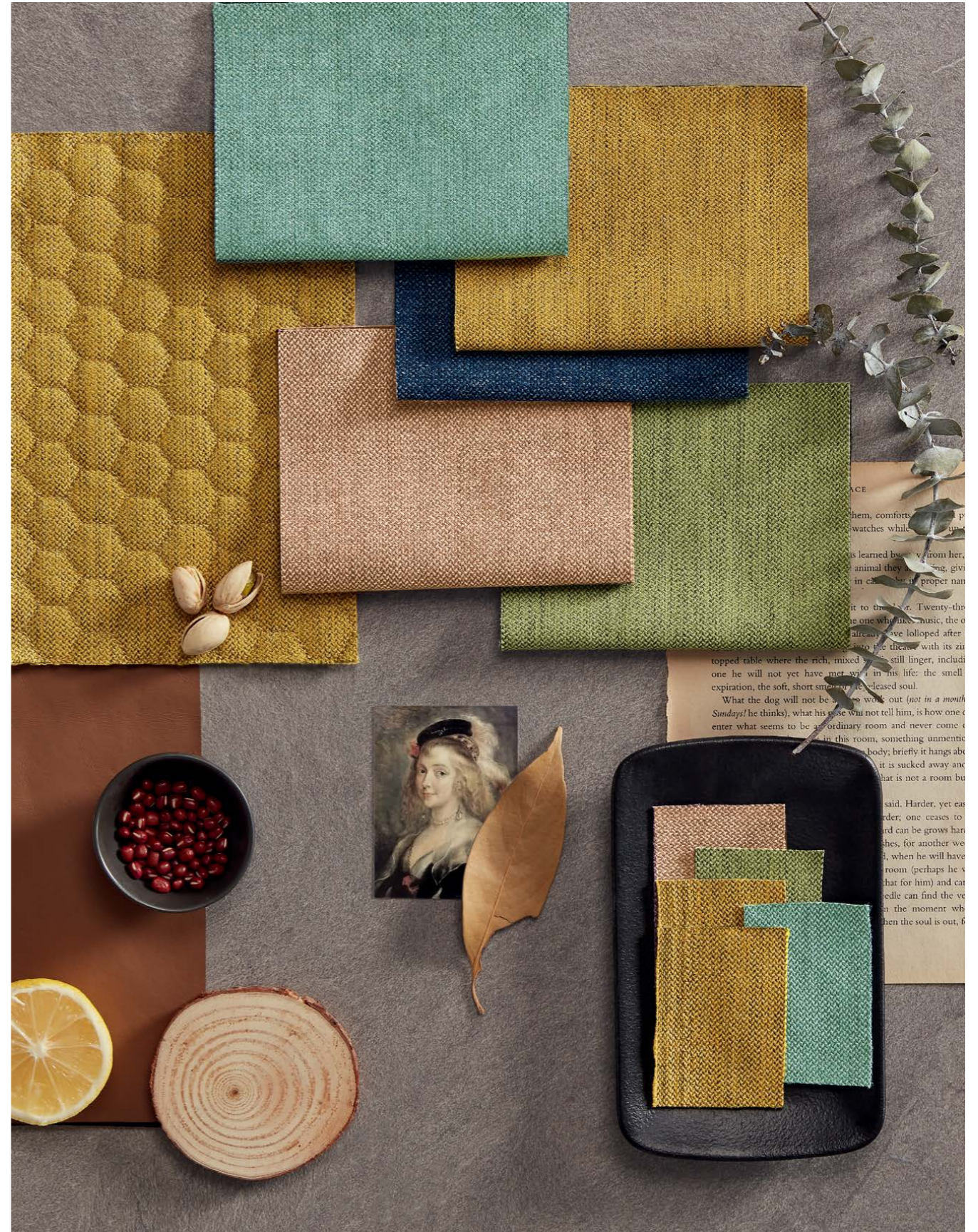
如你所见，它像开心果，  
又像张大嘴对着你微笑。  
U 字母外形，是悠闲的外表。

The U-shaped contour offers an idyllic  
scene. Its shape looks like a pistachio,  
or a mouth wide open, laughing out loud.



谈笑风生中, 自由言说新潮流趋势.....  
Talk freely about the new trend on U series...









### 水墨情话, 莫奈印象派

如若纯色是留白,  
水墨便是莫奈笔下的印象派情话。  
黑白是夜色下的《水上景色》, 安然静雅;  
墨绿是春光里的《日出印象》, 自然生机。  
跟随视觉无穷想象, 彰显空间艺术品位。

### Monet's Impressionism tells the story

Sitting in UC, feel Monet's impressionism.  
Black and white U series is Monet's Water Lilies, quiet and elegant, while blackish green U series is Monet's Impression, Sunrise, natural and lively.  
With such sight in your eyes, you could free your imagination, and artistic taste for space is naturally revealed.



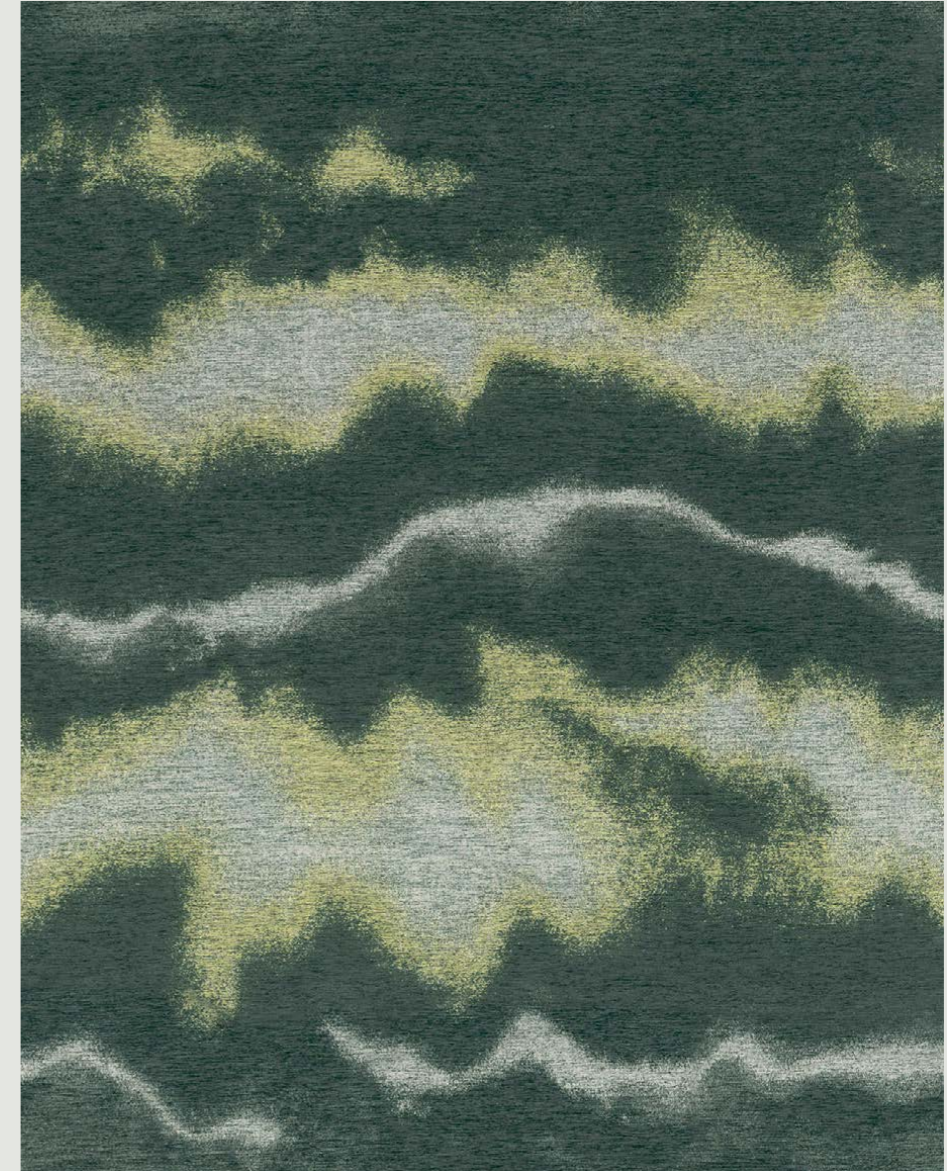
### 古汉代提花, 交织画中景

工艺难于印花、染花,  
纱线染色, 再提花编织,  
逾千次经纬线交织考究,  
花色图景才对位成型,  
闲谈之余, 欣赏水墨画中景。

### Jacquard Weave Originated from Han Dynasty Interwoven Landscape into the Picture

Interweaving yarns with jacquard weave technique after dyeing is a very delicate and difficult procedure, with which the scene will be manifested after more than 1000 times of weaving. Using this technique, U series allows you enjoy the ink painting during casual chat.

## Flower Painting





### 一体成型钢脚, 便捷拆装

钢制细管脚, 诠释极简风格,  
120°张力, 坐躺式体验,  
简易 4 颗螺丝, 锁牢椅座, 手工易拆装。

### One-piece Steel Leg, Assemble or Disassemble at Your Convenience

With fine tubular steel leg and 120-degree slant angle, comfort is assured.  
There are only 4 screws for fixing the legs, making it easier to assemble  
and disassemble.







# UD GRACE

右手一支钢笔，  
左手红酒杯，  
一个人的思考，  
音乐相伴中微醺片刻。  
D 字母外形，是优雅的轮廓。

With a pen on one hand, and a glass of red wine on the other, sitting in UD and getting immersed in thinking while the music is on.  
D-shape is UD's elegant silhouette.



“设计的过程是一个不断寻找、发现、创造美的过程，这是设计师与生俱来的使命。”

——UD 悠蒂产品设计师  
CLAUDIO BELLINI DESIGN

“The process of design includes seeking, discovering, and creating beauty, which is an innate mission for designers.”

—Designer of UD  
CLAUDIO BELLINI DESIGN



86 年的拉菲，谱写红酒经典，  
一个人的 UD 时光，回归自我。  
平整坐面和滑顺背靠，弧线相连，  
凝塑圆润外形，诠释优雅美空间。

As Château Lafite-Rothschild 1986 is classic  
for every red wine lover, UD may be the same  
to people who enjoy their personal space and  
time.

Uncluttered seat and smooth back bring UD its  
sleek appearance, showcasing an elegant and  
attractive space.





# SEAMLESS CONNECTION

## 回弹连接, 天衣无缝

胶囊连接杆, 天地连接线,  
无螺丝、无多余装饰, 简美外形。  
大直径包裹, 内置缓冲气杆机制,  
入座时 3cm 缓冲, 椅座主动迎合身体需要,  
360°旋转的身姿, 优雅如初。

Capsule-shaped connecting part has no screws and redundant decoration, simple yet glamorous.  
The upper connecting part of larger diameter envelops the lower part, and with the built-in gas lift mechanism equipped, a height of 3cm is reserved for buffering, perfectly fitting any move of your body. 360-degree revolving function shapes an elegant "dancer" out of you.

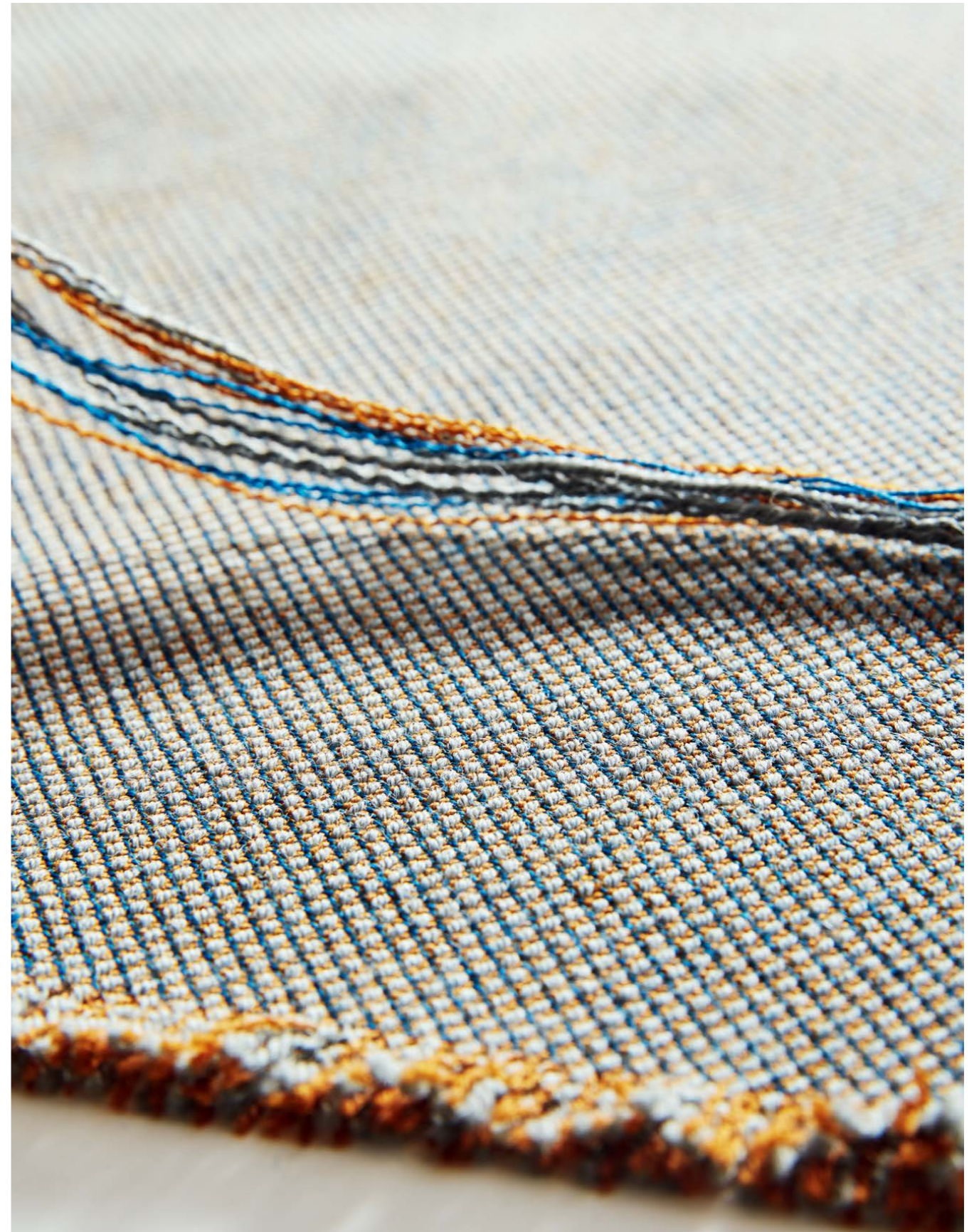


### 进口面料, 天然舒适感

丹麦进口, 纯羊毛面料,  
会呼吸的螺纹织花,  
回弹好无褶皱。

### Imported Material, Natural Comfort

The pure wool is imported from Denmark.  
The breathing woven material is resilient and  
crease-free.








极致玩家相邀，片刻微醺，  
是一种生活态度，更是一种生活常态。

Tipsy in UD, a kind of life attitude, a  
casual state of life.



色彩是空间的表情，触感是面料的灵魂。  
Space smiles to you with colors, while the fabric shows spirit within a touch





## UC RELAX YOUR BODY AND MIND

秋千的悠悠然，让身与心同在。  
C字母外形，是悠然的形状。

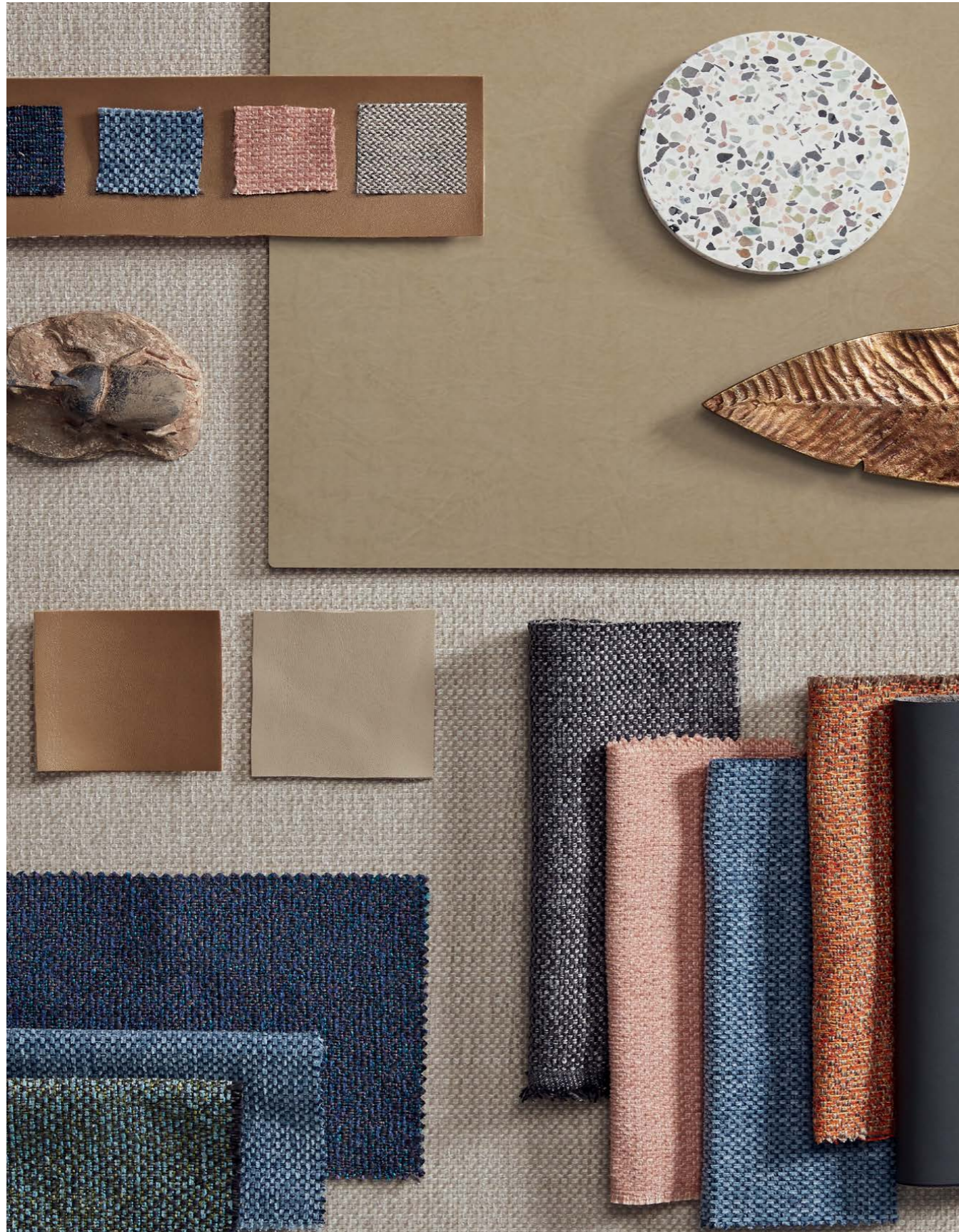
C-shaped UC is like a swing. Sitting on it, your body and mind become fully relaxed.



**极简, 纯粹心境**  
Simplistic Style

皮饰面框形钢脚, 视线留白,  
背皮坐垫面料结合, 薄厚层次分明,  
将干净理性之美延续、升华,  
诠释极简主义智慧——纯粹心境。

Decorated with leather finish on its upper part, the steel-frame leg fully explains "less is more". Thin leather sofa back paired with thick sofa cushion fabric: the beauty of different layers is created effortlessly. Clean and neat, UC brings a simplistic feeling.



### 三防, 一抹无痕

#### Three-proofing: Say Goodbye to Stains

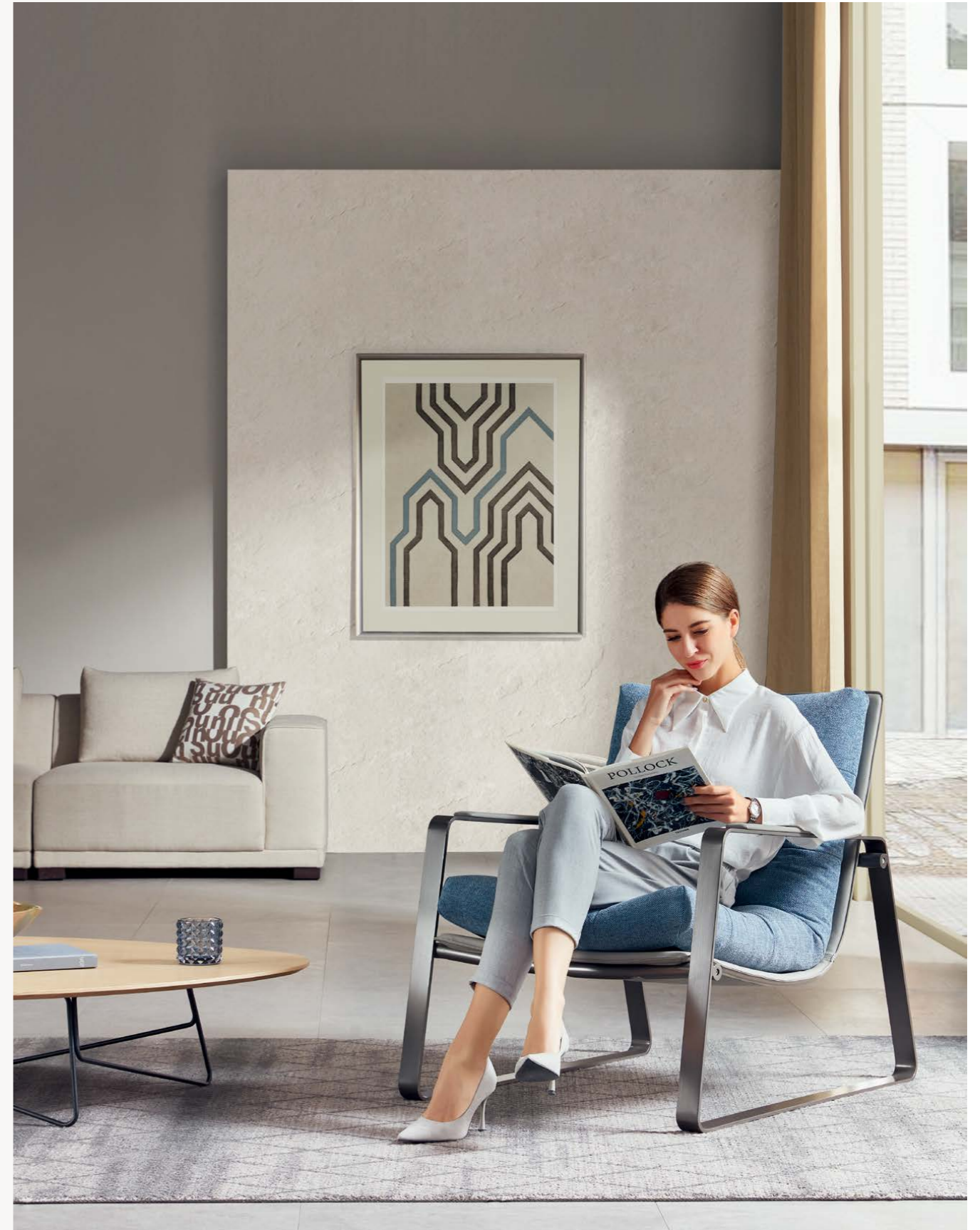
椅座咖啡渍, 总会破坏好心情。  
美国纳米技术研发, 防水、防污、防油,  
只需轻轻一抹, 污渍不留痕。

Coffee stain is a headache for cleaning,  
but don't worry, UC adopts American  
nanotechnology fabric, which has passed strict  
tests on water-proof, antifouling, and grease-  
proof functionality. Stains will no longer exist  
with a gentle wipe.



繁忙工作后释放压力, 悠悠然漫步入座, 身心放松的阅读时光, 正合心意。

Punch out, say goodbye to all work stress, and sit in UC with books in your hand, oh, what a wonderful day!





只有更努力, 才会更如意。  
一场酣畅淋漓的讨论, 悠然自在, 恰入其境。

Effort pays. Put time and energy into discussion and negotiation to obtain a conclusion, and leisure after is an extra treat.





WELCOME  
A CHANGE  
OF  
SPACE



## POETIC LEISURE VIEW.

诗意栖想地



“将设计融于人性,将家具带入悠闲自在的情境,  
一切随心。”

—— 德国 & 瑞士 ITO 工作室  
始于 1987

“Integrate design with human nature and create carefree  
spaces. Always follow your heart.”

—— ITO  
Start in 1987

## La La Land

Alongside the coastline, waves battered the rock, seagulls hovered around, two fin whales frolicked in the distance and a sailing boat loomed up out of the fog... Designers of ITO incorporate the sailing boat into the design and use the sail as the mainframe and cobblestone as the base. Inheriting the wisdom of raising sails and lowering sails, a flip sofa comes into being, bringing you into a La La Land the moment you sink into it.



## 诗意栖想地

青山氤氲, 绿水清流, 落霞与海鸥起舞, 一艘远帆渐隐渐近.....ITO 设计师将“帆游海上”的美景融入设计, 以“帆”为骨架, 仿“鹅卵石”形坐垫, 借用扬帆、落帆的人类智慧结晶, 创造翻转自如, 休憩洽谈两用的沙发椅, 带你入境一处“帆游海上碧空尽”般心旷神怡的诗意栖想地。

# PRACTICAL CREATIVE



## 放心收纳 底舱任由你摆布

临登机时，修改方案的窘迫历历在目。  
550\*650\*300mm 大空间，如游船的底舱，  
开阔空间大容量，书本包包自如收纳。

## Storage base at your disposal

Revising plans in the waiting hall is quite  
normal for employees.  
550\*650\*300mm storage space is as large as  
the base of the ship, admitting your books and  
backpacks easily.



**U**F brings nature to your office and enables you to be immersed in the poetic coastal views. It naturally accommodates most public spaces and creates a La La Land in this bustling world. Holding a book and taking a sip of tea, you can enjoy a relaxing moment here.

让大自然走进办公室，宛如沐浴在海边风景里，沉浸在专属自己的诗意空间里。悠帆沙发椅，适用于大多数公共空间，在喧闹和人来人往中开辟独立的栖想地。或畅聊、或休憩、或冥想，一本书，一杯香茗，静享一下午的悠闲时光。

## NATURAL UF

Enjoy a wonderful moment!

诗意 栖想 惬意

ARTICLE

UF 01



## Hey, open your mind!

### Hey, 去想你所想吧!

方案卡顿、午后困乏、挑战一波接一波，  
何不丢下暂时的包袱，与悠帆来一场约会？  
扬帆，独自冥想，深呼吸缓解身心压力；  
落帆，开放畅聊，激情澎湃肆意表达创意。

Feel lethargic and long for fresh ideas?  
Why not have a date with UF?  
With the "sail" raised, take a breath and meditate;  
With the "sail" lowered, exchange ideas with partners.

Designed by: ITO + SUNON



# 正面

110x260mm

# 插页

位置于 P67-68 中间

Hold the back handle gently, flip the felt screen and back synchronously, and then put it on the ground steadily.

嗨! 这样翻转即可: 轻提后背拉手, 毛毡屏风与背靠垫同步反转, 如若你等待它稳稳落地后再松手, 它会感受到你的温柔哦。



① 毛毡板 Felt screen    ② 沙发座 Seat    ③ 脚架 Base    ④ 隐形滑轮 Invisible casters

- Felt screen: Polyester fiber, recyclable and durable.
- Back: Interior hollow-out elastic set-up; high-density shaped sponge; elastic faxen thread SM-PC, airy, fold-less, resilient and waterproof.
- Seat cushion: Elastic band offers a buffer when you sit down, 80mm-thick seat cushion ensures long-time comfort.
- Base: Refined nylon+ glass fiber; exquisite etched surface looks elegant.
- Invisible casters: The casters are embedded in the base, capable of bearing 122 KG weight and 40,000 times of sliding tests.

- 毛毡屏风: 聚酯纤维原料, 环保可回收, 融入其他产品的生命周期, 减少浪费。
- 背靠垫: 内部特有韧材镂空弹力设计, 可增强腰部贴附支撑。高密度定型绵填充, 采用弹力麻绒 SM-PC 面料, 亲肤透气, 高弹无褶皱、可防水。
- 坐垫: 内置特有弹力绷带, 入座弹力缓冲, 80mm 坐垫厚度, 软硬适中, 久坐也舒适。
- 脚架: 精选尼龙 + 玻纤材质, 置物表面采用蚀纹工艺, 细腻润滑更美观。
- 隐形椅轮: 镶嵌进底架, 经加载 122kg, 无障碍循环 40,000 次检测, 舒心推移。

# 反面

110x260mm







## Whoa! Let's flip it!

### 嗖...! 单手给屏帆一个跟斗

私密的话题交谈? 激烈的团队讨论?  
工作即时切换, 悠帆来解你燃眉之急,  
单手轻拉把手, 即可轻松翻转屏帆,  
激烈畅谈后, 让自己安静休憩一会儿。

Private talks? Heated discussions?  
UF can always meet your needs.  
Holding the handle, you can flip the screen  
easily, giving yourself a rest after vigorous  
debates.



## Join us! Roam from now!

### 游漫来去间 悠然加入讨论

隐形万向轮配置, 视觉浑然一体, 来去稳妥不留痕。

Invisible casters enable smooth movements without  
even the slightest traces.

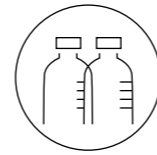


### 吸声屏“帆” 悠幽密静港湾

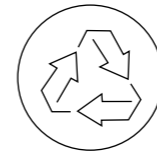
激烈讨论后的片刻宁静，它能最懂你。船“帆”造型设计，半包围私密围护；聚酯纤维原料，高效吸收噪音，旁若无人般静享安静。

### Sound-absorbing safe haven

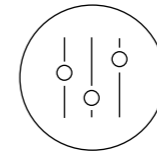
UF knows what you want. The sail-shape screen gives you semi-open protection, while polyester fiber brings a great sound-absorbing performance.



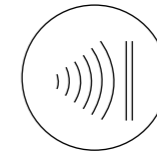
无甲醛排放  
Formaldehyde-free



可回收  
Recyclable



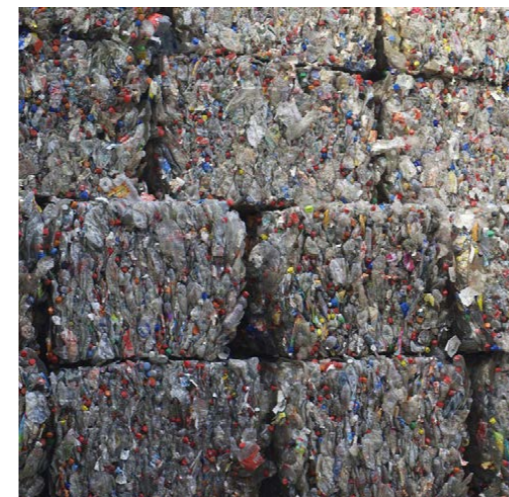
阻燃  
Fire-resistant



吸音  
Sound-absorbing



防霉  
Mold-proof



享受大自然的诗意，也专注与大自然的和睦相处。屏风，聚酯纤维原料，自然环保可回收。

Enjoy the poetic beauty of nature and get along with it harmoniously. The screen is made of polyester fiber, natural, eco-friendly, and recyclable.

备注：以上吸声检测报告根据 GB/T 1673:1997 计算

Note: the above sound-absorbing date is calculated based on GB/T 1673:1997.



Aspire to learn more and display a genteel manner. There are lucid waters and lush mountains deep in the heart. A poetic space brings an influx of brilliant ideas. Take UF, and join us now!

渴望新知，馥郁书香，  
心中自有大自然的青山、绿水悠然。  
惬意畅谈，身心相契，  
尽情享受办公带来的美妙诗意。  
推着悠帆，轻松加入讨论，  
肆意挥洒创意 Idea。

## UF

Start a cozy and carefree life!

舒适 静谧 悠然





SU36.1.CN  
W970\*D1050\*H1020(mm)



SU36.1.MX  
W970\*D1050\*H1020(mm)



SU37.1.CN  
W600\*D480\*H420(mm)



SU37.1.MX  
W600\*D480\*H420(mm)



SU35.1.CN/WP  
W780\*D820\*H850(mm)



SU35.1.MX  
W780\*D820\*H850(mm)



SU30.1.MR  
W780\*D810\*H860(mm)



SU30.1.HF  
W780\*D810\*H860(mm)



SU30.1.MR  
W780\*D810\*H860(mm)



SU31.1.YR  
W740\*D710\*H740(mm)



SU31.1.MR  
W740\*D710\*H740(mm)



SU32.1.CN  
W720\*D860\*H830(mm)



SU32.1.MR  
W720\*D860\*H830(mm)



CUF10GM  
W760\*D600\*H805(mm)

SU36

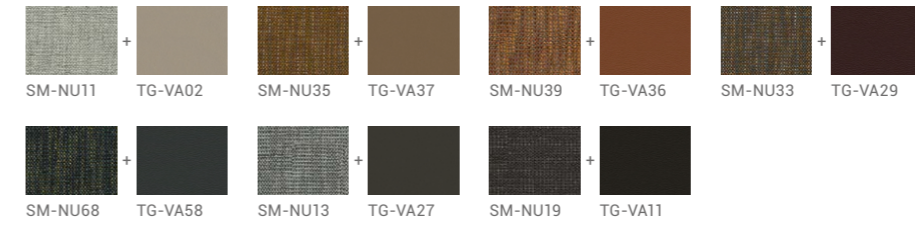
半皮沙发 Seat (cushion side)



半皮脚踏 Seat (cushion side)



皮布沙发 / 脚踏 Seat (cushion side)



SU35

座内 / 座外 Seat (cushion side) / Seat (leather frame side)



座内 Seat (cushion side)



SU30

背内 / 座内 / 座外 / 抱枕 Back (cushion side) / Seat (cushion side) / Seat (leather frame side) / Pillow

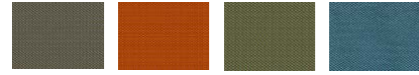


背内 / 座内 / 座外 / 抱枕 (固定搭配) Back (cushion side) / Seat (cushion side) / Seat (leather frame side) / Pillow (fixed collocation)



## SU31

扶手 / 背 / 座 Armrest / Back / Seat



S-KU22B S-KU30B S-KU62B S-KU82B



TM-CI80 TM-CI81 TM-CI82 TM-CI83 TM-CI50 TM-CI21 TM-CI35 TM-CI10 TM-CI42 TM-CI30 TM-CI29 TM-CI27



TM-CI60 TM-CI62 TM-CI27H TM-CI42H TM-CI50H TM-CI81H TM-CI83H

## SU32

背框 Back Frame



TP-PV11H TP-PV20H TP-PV22H

扶手面 Armrest Surface



TP-NP27H TP-PV22H TP-PV20H TP-NP21H TP-NP14H TP-NP11H TP-NP10H

软包 Upholstery



SM-SF27B SM-SF29B SM-SF35B SM-SF42B SM-SF50B SM-SF62B SM-SF65B SM-SF80B SM-SF81B



TP-NP10H TP-NP11H TP-NP14H TP-NP21H TP-NP27H

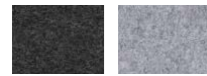
## UF

座内 Seat (cushion side)



SM-PC10B SM-PC27B SM-PC21B SM-PC51B SM-PC11B SM-PC60B SM-PC62B SM-PC83B

毛毡板 Felt Screen

黑色  
Black 灰色  
Grey

塑料脚 Plastic base

流星灰  
Meteor Grey